



PROGRAM

Conference Venue Map

- Conference venue is situated one floor down from the hotel lobby
- Registration and information is situated in the conference lobby
- All session venues are marked individually



Table of contents

Conference map	2
Table of contents	3
Greetings from Dr. Michael Doyle	4
Students flyer	5
Program Tuesday, June 13 th	6
Program Wednesday, June 14 th	7
Program Thursday, June 15 th	8
Concurrent session A	9
Concurrent session B	12
Concurrent session C	17
Concurrent session D	20
Concurrent session E	24
Concurrent session F	29
Concurrent session G	33
Concurrent session H	36
Concurrent session I	41
Concurrent session J	45
Posters	50
IAFMHS Awards	55

President Dr. Michael Doyle

Welcome to Split and the 17th Annual Meeting of the International Association of Forensic Mental Health Services. The Board of Directors would like to thank you all for your continuing support of the Association and for making time in your busy schedules to attend the Annual Meeting.

The strengths of our Association include its diverse and practical focus, its respect for both safe and effective care and wider public safety, and the impressive diversity of its membership. The IAFMHS encourages international dialogue and provides a forum for sharing information and experience about research and best practices in forensic mental health across professional or national boundaries.

We had a great conference in NYC last year and we are really looking forward to Split and the beautiful surroundings of the conference site.

We encourage you, of course, to attend the conference keynotes, paper and poster sessions, and workshops to hear or read about what your colleagues from around the world are doing to improve the research and practice of forensic mental health.

As always, meet with old friends or make some new ones in a relaxed atmosphere at the welcome reception on Tuesday evening, and if you're feeling up to it, join our fun run on Wednesday morning. Students are very welcome to attend the student breakfast and student social and of course we will be holding our annual conference dinner on Wednesday evening.

We also encourage you to take time to enjoy Split and the wealth of sites of historical significance and of course the stunning coastline.

Thanks to Roger Almvik, Peter Braun and Steffen Stamnes from the Local Organizing Committee; Quazi Haque and Cathy Wilson, Chairs of the Scientific Program Committee; and to all those who have helped to put together a meeting that highlights the Association's aims and values and showcases the host site.

Enjoy.

*Dr. Michael Doyle
President of IAFMHS*

#IAFMHS2017 Student Events

JUNE 13th | 08:00 – 09:00

Student Breakfast

All students welcome!

Breakfast presentations about IAFMHS Student Board, visiting Split, and "How to Write a Lot"!

JUNE 14th | 07:15 – 08:15

5K Fun Run

Meet in lobby at 07:10

JUNE 14th | 10:15 – 11:45

Panel: "Collaborative research across disciplines"

Dr. Marie-Hélène Goulet

Dr. Jennifer Storey

Dr. Kevin Douglas

JUNE 14th | 18:30 – 21:00

Student Social: "Life's a Beach" Cocktails & Bistro Bar

Meet in lobby at 18:10

Strožanačka Cesta 12 B,

21312 Podstrana

3 Ways to Stay Involved

Student Board Nominations

We are looking for engaged, creative, and hard-working students to run as candidates for the 2017-2018 student board. Self-nominations are encouraged.

Mentorship Program

Apply and be matched with a mentor/mentee with similar interests!

- Provide or receive support
- Draw on expertise
- Facilitate relationships between experts and newcomers
- One-year commitment

Campus Representative Program

This is a new initiative. It will provide students with leadership and professional development experience. We encourage you to apply for a one-year term of service as a campus representative.

Email us at: students@iafmhs.org

Tuesday, June 13

0800 - 1700	Onsite registration and badge pick-up
0800 - 0900	Student breakfast
0900 - 0945	Welcome introductions - Grand Dalmatia hall
0945 - 1045	Keynote 1: Dr. Jeffrey Swanson <i>Mental Health and Firearms Control Strategies</i>
1045 - 1115	Poster session
1115 - 1230	Concurrent Sessions A (page 9)
1230 - 1330	Lunch
1330 - 1445	Concurrent Sessions B (page 13)
1445 - 1500	Break
1500 - 1615	Concurrent Sessions C (page 19) SIG: Intellectual Disability
1615 - 1630	Break
1630 - 1745	Concurrent Sessions D (page 23) SIG: Mental Health Courts & Diversion SIG: FMH Nursing SIG: Service, Development, Organization, Strategy & Delivery
1900	Reception

Wednesday, June 14

- 0715 - 0815 Fun run
- 0900 - 1000 Welcome & Introduction to Derek Eaves Lecture
Keynote 2: Dr. Michael Daffern
Treatment of Violent Offenders
R Müller-Isberner Award
- 1000 - 1015 Break
- 1015 - 1130 Concurrent Sessions E (page 27)
Students Panel
- 1130 - 1145 Break
- 1145 - 1300 Concurrent Sessions F (page 33)
SIG: African Network
- 1300 - 1400 Lunch
- 1400 - 1515 Poster Session
- 1515 - 1630 Concurrent Sessions G (page 38)
SIG: RISC Team
SIG: Long-Term Care
- 1800 Transport to city/ conference dinner
Students evening!

Thursday, June 15

0845 - 0945	Keynote 3: Julia Warren-Sykes <i>Safeguarding Vulnerable Persons and the Prevent Duty</i>
0945 - 1000	Christopher Webster Award
1000 - 1015	Break
1015 - 1130	Concurrent Sessions H (page 42)
1130 - 1200	Break and check out
1200 - 1315	Concurrent Sessions I (page 48)
1315 - 1415	Lunch
1415 - 1515	Annual General Meeting
1515 - 1630	Concurrent Session J (page 53)
1630	Closing ceremony and Welcome to IAMFHS Antwerp 2018

Concurrent session: A

Tuesday, June 13

11:15-12:30

A1.1 – Symposium – Grand Dalmatia

Symposium #266848

Randomised Controlled Trials and Secure Environments: Unique Problems, Unique Benefits

Harry Kennedy, University of Dublin Trinity College (TCD) (Ireland)

A content analysis of forensic mental health patients' experience of participating in a randomized controlled trial of cognitive remediation.

Harry G. Kennedy

Randomized controlled trial of the short term effects of OROS-methylphenidate on ADHD symptoms and behavioural outcomes in young male prisoners with attention deficit hyperactivity disorder (CIAO-II)

Lindsay D.G. Thomson

A randomized controlled trial of cognitive remediation for a national cohort of forensic mental health patients with schizophrenia or schizoaffective disorder.

Ken O'Reilly

--- ∞ ---

A1.2 - Forensic Assessment - Hvar

Paper #264446

To Tell or Not To Tell: Do Evaluators Provide Feedback in the Context of Forensic Evaluations

Elizabeth Foster, Widener University (United States)

Sharon Kelley, Institute of Law Psychiatry & Public Policy

Stephanie Brooks Holliday, RAND Corporation

Paper #265210

Proof problems in assessing capacity for criminal responsibility of offenders with drug-induced mental disorders

JiNian Hu, China University of Political Science and Law (China (People's Republic))

Paper #266321

Diffusion of forensic psychiatrists' risk assessment practices across informal professional networks

Ilvy Goossens, Simon Fraser University (Canada)

Yanick Charette, Université de Montréal

Tonia L. Nicholls, University of British Columbia/BC Mental Health and Substance Use Services

Michael C. Seto, Royal Ottawa Healthcare Group; University of Ottawa

Anne G. Crocker, Université de Montréal

Paper #266565

A Multi-Country Snapshot of Test Usage in Forensic Mental Health Assessment Using Case Law References

Christopher King, Montclair State University (United States)

Alisha Desal, Drexel University

Sarah Fishel, Drexel University

Claire Moore, Drexel University

David DeMatteo, Drexel University

A1.3 - Forensic Mental Health - International Topics – Brac I

Paper #263377

The Implementation of Forensic Psychiatric Services in the Western Balkans

Hans-Joachim Salize, Central Institute of Mental Health/Medical Faculty Mannheim/University of Heidelberg (Germany)

Paper #266777

Mentally disordered offending immigrants - new challenges for forensic psychiatric hospitals

Beate Eusterschulte, Haina Forensic Psychiatric Hospital (Germany)

Paper #267115

EU COST-Action IS1302 'Developments of the EU initiative : Towards an EU Research Framework on Forensic Psychiatry'

Peter Braun, Pompefoundation part of Pro Persona Mental Health Services Netherlands (Netherlands)

Paper #0

Violence Risk Assessment in Africa

Adegboyega Ogunwale, (Abeokuta, Ogun State, Nigeria)

A1.4 - Juvenile Offenders – Brac III

Paper #265094

Parent Management Training and Emotion Coaching for Children with Callous-unemotional Traits: A Treatment Development Study

Robert McMahon, Simon Fraser University (Canada)

Lynn F. Katz, University of Washington

Suzanne E.U. Kerns, University of Denver

Dave S. Pasalich, The Australian National University

Michael D. Pullmann, University of Washington

Kyrill Gurtovenko, University of Washington

Shannon Dorsey, University of Washington

Paper #266746

Runaway episodes in the youth protection system: the influence of reward seeking and self-regulation

Sophie Couture, Université de Montréal, CIUSSS Centre-sud de l'île de Montréal (Canada)

Catherine Laurier, Université de Montréal

Sébastien Monette, Université du Québec à Montréal

Denis Lafortune, Université de Montréal

Paper #266938

The role of education, participation in departmental decisions, and burnout in social support and consulting networks in juvenile probation departments

Evan Holloway, Fordham University (United States)

Candace Mootoo, Fordham University

Uzay Kirbiyik, Indiana University

Matthew C. Aalsma, Indiana University

Paper #266974

Structured risk assessment of youth who have threatened to perform school massacres

Monica Gammelgard, Vanha vaasa state mentalhospital (Finland)

Anna Malja Kolvisto, University of Tampere

Nina Lindberg, Helsinki University Central Hospital

Riittakerttu Kaltiala-Heino, University of Tampere

A1.5 – Roundtable - Korcula

Roundtable #265856

Cross-cultural issues in forensic assessment: problems and solutions

Barry Rosenfeld, Fordham University (United States)

Stephen Hart

Professor, Simon Fraser University (Canada)

Monica Rivera-Mindt

Professor, Fordham University (United States)

Stephane Shepherd

Senior Lecturer, Centre for Forensic Behavioural Science, Swinburne University of Technology, & Victorian Institute of Forensic Mental Health (Australia)

Virginia Barber-Rioja

Clinical Director, Correctional Health Services, Rikers Island Correctional Facility (United States)

Concurrent session: B

Tuesday, June 13 13:30-14:45

B2.1 - Symposium – Vis

Symposium #266870

Treatment As Usual (TAU) in Secure Environments: What Is It, Does It Work, How Does It Work?

Harry Kennedy, University of Dublin Trinity College (TCD) (Ireland)

Evolution, Evaluation and Treatment as Usual

Harry G. Kennedy

A case study of the challenge to design and implement an appropriate control condition for a treatment trial and implications for evidence based forensic mental health care

Lindsey Gilling McIntosh

To treat or not to treat: an evaluation of the effectiveness of psychosocial programs within a sample of forensic patients with schizophrenia or schizoaffective disorder

Ken O'Reilly

--- ∞ ---

B2.2 - Roundtable – Korcula

Roundtable #266296

Vulnerability of the forensic expert in the public arena

Corine de Ruiter, Maastricht University (Netherlands)

Jane L. Ireland, Ph.D.,

Chair in Forensic Psychology, University of Central Lancashire (United Kingdom)

Robert Leark, Ph.D.,

Professor Emeritus, Forensic Psychology, Independent Forensic Practice (United States)

--- ∞ ---

B2.3 - Intimate Partner Violence I – Brac I

Paper #265158

Examination of the Use of the B-SAFER Across Different Ethnic Groups

Jennifer Storey, Royal Holloway University of London (United Kingdom)

Susanne Strand, Örebro University/Centre for Forensic Behavioural Science at Swinburne University of Technology

Stephane Shepherd, Centre for Forensic Behavioural Science, Swinburne University of Technology, & Victorian Institute of Forensic Mental Health

Paper #265215

Intimate Partner Homicide and Immigration: A Norwegian 22-Year Cohort Study.

Solveig Vatnar, Oslo University Hospital, Centre for Forensic Psychiatry and Oslo and Akershus University College of Applied Sciences, Faculty of Health Sciences (Norway)

Christine Friestad, Oslo University Hospital, Centre for Research and Education in Forensic Psychiatry and University College of Norwegian Correctional Service

Stål Bjørkly, Oslo University Hospital, Centre for Forensic Psychiatry and Molde University College

Paper #265432

Self-Reported Traits and Behavior Among Intimate Partner Violence and Prior Intimate Partner Stalking Offenders

Jacomina Gerbrandij, Fordham University (United States)

Allison Mischel, Fordham University

Barry Rosenfeld, Fordham University

Paper #265831

Male-on-female sexual homicides in Sweden 1990 to 2013

Daniel Karlberg, Board of forensic medicine (Sweden)

Shilan Caman, National Board of Forensic Medicine/Karolinska Institutet

Eva von Vogelsang, National Swedish Police

Joakim Sturup, Swedish National Board of Forensic Medicine/Karolinska Institutet

--- ∞ ---

B2.4 - Symposium – Lastovo

Symposium #265807

Care and treatment of London offenders with mental health conditions delivered by non-governmental mental health organisation Together for Mental Wellbeing

Linda Bryant, (United Kingdom)

Liaison and diversion services in London police custody suites and criminal courts

Matina Maougka, Fabio Gomes

High risk, high harm: mental health interventions for offenders under the offender management of the National Probation Service (London division)

Anabel Cando

Service user involvement and Peer Support: Putting the most excluded and hard-to-reach offenders at the centre of their mental health care and support

Jess Worner

--- ∞ ---

B2.5 - Risk Assessment - Juvenile Offenders – Hvar

Paper #265886

Construct Validation of the TRIN/VRIN scales: Impact of simulated distortion and derivation of standardized cut scores

Kori Ryan, Fitchburg State University (United States)

Robert Leark, Independent Forensic Practice

Heather McMahon, Independent Practice

Samantha Story, Alliant International University

Paper #266446

Does Life Satisfaction Protect Against Adolescent Offending?

Jodi Viljoen, Simon Fraser University (Canada)

Roger Tweed, Kwantlen Polytechnic University

Gira Bhatt, Kwantlen Polytechnic University

Lara Aknin, Simon Fraser University

Catherine Schaffer, Simon Fraser University

Kate Hannibal, Simon Fraser University

Kevin S. Douglas, Simon Fraser University

Nathalie Gagnon, Kwantlen Polytechnic University

Stephen Dooley, Kwantlen Polytechnic University

Paper #266793

Adding positive focus to risk assessment and treatment: the value of the SAPROF-YV and SAVRY in juvenile justice

Anneke Kleeven, VU medical centre - Child- and Adolescent Psychiatry (Netherlands)

Michiel de Vries Robbé, Van der Hoeven Kliniek

Paper #266815

Does Traumatic Stress Symptoms Enhance Identification of Delinquent Behaviors in Justice-Involved Youth?

Keith Cruise, Fordham University (United States)

Evan D. Holloway, Fordham University

Julian Ford, University of Connecticut Health Center

Damion Grasso, University of Connecticut Health Center

--- ∞ ---

B2.6 - Recovery & Treatment Outcomes – Brac III

Paper #257153

Predictors of quality of life amongst inpatients in a forensic mental health setting.

Padraic O Flynn, National Forensic Mental Health Service - HSE (Ireland)

Roisin O' Regan, National Forensic Mental Health Service - HSE

Paper #261455

A scoping review of recovery in mental illness for justice-involved individuals: Moving from management to empowerment?

Ashley Lemieux, McGill University (Canada)

Laurence Roy, McGill University

Marichelle Leclair, McGill University

Anne G. Crocker, Université de Montréal

Rob Whitley, McGill University

Paper #264929

Patient reflections on recovery: 20 Years on from high secure care

Cheryl Rees, University of Edinburgh (United Kingdom)

Lindsay Thomson, University of Edinburgh

Caroline Hope, University of Edinburgh

Paper #266288

Implementing 'Positive Behavioural Support' within Secure Forensic Services

Kristy Summers, Partnerships in Care (United Kingdom)

Natalie Brotherton, Partnerships in Care

B2.7 - Risk Assessment & Risk Management – Grand Dalmatia

Paper #261753

An exploration of Forensic Mental health nurse attitudes towards risk assessment within a secure service

Jodie Alder, South Staffordshire and Shropshire Foundation NHS Trust (United Kingdom)

Robert McGrath, South Staffordshire and Shropshire Foundation NHS Trust

Paper #266652

Breaking down the wall – challenges in resocialization

Ellen van den Broek, Forensic psychiatry/psychology (Netherlands)

Paper #266687

The development of a quality tool for assessment of HCR-20 version 3 within a secure service: A feasibility study.

Piyal Sen, Elysium Healthcare and King's College, London (United Kingdom)

Ryan Bailey, St Andrew's Essex

Robert Farrelly, St Andrew's Essex

Mohammad Islam, St Andrew's Essex

Erica de Lange, St. Andrew's Essex

Edmond Munteanu, St. Andrew's Essex

Marco Picchioni, King's College London

Paper #265499

Evaluating a Supportive Release Programme for Ex-Prisoners with Mental Health Needs – The RESET Study

Jacqueline Mansfield, Canterbury Christ Church University (United Kingdom)

Douglas MacInnes, Canterbury Christ Church University

Janet Parrott, Oxleas NHS Foundation Trust



Elysium Healthcare brings together a unique approach to the delivery of care where the patient is embedded in the heart of all aspects of hospital life. Together, our staff, our patients and our stakeholders shape the care of today and the future.

The services we provide are highly specialised and have been uniquely developed with the individual patient in mind. Our programmes are evidence based and are supported by careful research. Our aim is to ensure that the patient is a partner in their care agreeing shared aims and objectives that motivate to progress and move forward. We work on a collaborative basis with all stakeholders to help the patient move through the care pathway so that where possible, independent living can be achieved.

Careers & Recruitment

0208 327 1834 | careers@elysiumhealthcare.co.uk

General Information

0208 327 1800 | info@elysiumhealthcare.co.uk

www.elysiumhealthcare.co.uk



ACUTE / PICU /
HDU SERVICES



SECURE
SERVICES



CAMHS



REHABILITATION
SERVICES



PRIVATE PATIENT
SERVICES

Concurrent session: C

Tuesday, June 13 15:00 - 16:15

Special Interest Group:

- Intellectual Disability – Brac I

--- ∞ ---

C3.1 - Forensic Pathways and Treatment – Grand Dalmatia

Paper #264414

Early indicators of different pathways through the forensic Hospital

Moritz Thede Eckart, Vitos Haina Forensic Psychiatric Hospital, Haina, Germany (Germany)

Christian Fräbel, Institute of Forensic Psychiatry; Essen-Dulsburg University

Krimmer Sven, Vitos Haina Forensic Psychiatric Hospital

Norbert Leygraf, Institute of Forensic Psychiatry; Essen-Dulsburg University

Rüdiger Müller-Isberner, Vitos Haina Forensic Psychiatric Hospital

Paper #265349

Forensic Medium Secure Units; Do they work?

Michael Doyle, South West Yorkshire Partnership NHS Foundation Trust / Uni of Manchester (United Kingdom)

Quazi Haque, Royal College of Psychiatrists Forensic Quality Network & Elysium Healthcare

Paper #266010

Characteristics of long stay and short stay forensic patients

Sven Krimmer, Vitos Haina Forensic Psychiatric Hospital (Germany)

Maik Hensel, Essen-Dulsburg University

Ruediger Müller-Isberner, Vitos Haina Forensic Psychiatric Hospital

Norbert Leygraf, Essen-Dulsburg University

Paper #267281

Should child pornography users be subject to involuntary mental health treatment?

Emilie Picard, Fordham University (United States)

--- ∞ ---

C3.2 - Symposium – Hvar

Abstract #265609

Examining the influence of promotive and protective factors on community supervisee outcome

Ralph Serin, Carleton University (Canada)

Examining the relative contribution of promotive and protective factors in probationer success.

Ralph C. Serin

Establishing the construct validity and utility of protective factors using DRAOR

Caleb Lloyd

High-risk men released from prison in New Zealand: What impact do promotive and protective factors have on outcomes in the community?

Simon Davies

--- ∞ ---

C3.3 - Psychopathy – Brac III

Paper #260793

Psychopathic traits and ADHD-related symptoms

Malin Pauli, Karolinska Institutet, Department of Clinical Neuroscience (Sweden)

Jenny Liljeberg, Karolinska Institutet

Petter Gustavsson, Karolinska Institutet

Marianne Kristiansson, Karolinska Institutet

Katarina Howner, Karolinska Institutet and National Board of Forensic Medicine

Paper #265150

Psychopathic personality traits as predictors of drug use. A comparison of psychopathy assessment measures

Asle M. Sandvik, The Norwegian Police University College (Norway)

Anita Lill Hansen, University of Bergen

Paper #265664

Comparing the Comprehensive Assessment of Psychopathic Personality (CAPP) to the Psychopathy Checklist, Screening Version (PCL-SV)

Ellen Quick, Fordham University (United States)

Barry Rosenfeld, Fordham University

Paper #267206

Relationship between behavioral characteristics and the PPI-R and SRP4 self-report measures of psychopathy.

Samantha Story, Alliant International University (United States)

Robert Leark, Independent Forensic Practice

Evan S. Norton, Alliant International University

Kori Ryan, Fitchburg State University

--- ∞ ---

C3.4 - Symposium – Vis

Symposium #265477

Seclusion and segregation - is this the only way to manage staff safety?

Morag Slessor, National Health Service (Scotland) (United Kingdom)

Seclusion: Results from a field trial not everybody wanted

Beate Eusterschulte

Demands, resources and wellbeing for clinicians working in a high secure forensic hospital

Amelia Cooper

Seclusion reduction in the BC Forensic Psychiatric Hospital – strategies and results

Johann Brink

No way out - one man's fight to survive long-term seclusion
Morag Slessor

--- ∞ ---

C3.5 - Mental Health in Corrections – Korcula

Paper #255756

Human Rights, Mental Health and Canadian Corrections: A Prison Ombudsman's Perspective

Ivan Zinger, Office of the Correctional Investigator of Canada (Canada)

Paper #263602

Focusing on the Needs, not the Deeds - A Partial Hospitalization Program in Prison for Mentally Disordered Inmates

Michel Schulte Ostermann, Institut für Sexualmedizin und Forensische Psychiatrie und Psychotherapie, Universitätsklinikum Schleswig-Holstein (Germany)

Carola Billen, Institut für Sexualmedizin und Forensische Psychiatrie und Psychotherapie, Universitätsklinikum Schleswig-Holstein

Christian Huchzermeier, Institut für Sexualmedizin und Forensische Psychiatrie und Psychotherapie, Universitätsklinikum Schleswig-Holstein

Stefanie Folgmann, Institut für Sexualmedizin und Forensische Psychiatrie und Psychotherapie, Universitätsklinikum Schleswig-Holstein

Paper #265191

The Needs Profile of Inmates with Severe Mental Illness

Kiren Sandhu, Centre for Addiction Mental Health (Canada)

Alexander Simpson, Centre for Addiction and Mental Health

Kiran Patel, Centre for Addiction and Mental Health

Tanya Connors, Centre for Addiction and Mental Health

Paper #266939

How do we meet the needs of ex-armed forces personnel in prison?

Verity Wainwright, University of Manchester (United Kingdom)

Sharon McDonnell, University of Manchester

Charlotte Lennox, University of Manchester

Jenny Shaw, University of Manchester

Jane Senior, University of Manchester

Concurrent session: D

Tuesday, June 13 16:30-17:45

Special Interest Groups:

- Mental Health and the Courts - Korcula
- FMH Nursing – Brac III
- Service, Development, Organization, Strategy & Delivery – Brac I

--- ∞ ---

D4.1 - Symposium – Vis

Symposium #266279

Innovative Practice in UK Secure Services to Reduce Restrictive Interventions

Daniel Angus, NHS Trust (United Kingdom)

Implementing a No Force First Restraint Reduction Strategy in UK Secure Services

Daniel Angus

Engaging Hearts & Minds: No Force First To Promote Progressive Culture

Dave Riley

The Safety Project – Using A Structured Risk Assessment Tool To Predict And Proactively Manage Violence In A High Secure Hospital

Panchu Xavier & Mark Thorpe

Engaging Hearts & Minds: No Force First To Promote Progressive Culture

Iris Benson

--- ∞ ---

D4.2 - Symposium – Hvar

Symposium #266807 and #266634

Where science meets practice: Dutch forensic application of innovative methods based on neuroscience

Josanne van Dongen, Erasmus University Rotterdam & Maaikes Kempes, Netherlands Institute of Forensic Psychiatry and Psychology (Netherlands)

Cognitive Biases of Forensic Psychiatric Outpatients with Aggression Regulation Problems and Innovative Methods for Treatment

Danique Smeijers, Mike Rinck, Erik Bulten, Robbert-Jan Verkes

Virtual reality aggression prevention training in forensic psychiatric centers in the Netherlands – results of a pilot study

Stéphanie Klein Tunte, Sarah van IJendoorn, Stefan Bogaerts, Wim Veling

Social-emotional behaviour in male psychopaths after placebo-controlled intranasal administration of oxytocin
Ronald Rijnders, Maaike Kempes, Thomas Rinne, Peter Bos, David Terburg, Jack van Honk

Electrophysiological correlates of empathy and psychopathy in forensic patients
Josanne D.M. van Dongen

Relationship between white matter integrity and psychopathic traits in offenders
Anouk Vermeij



D4.3 - Symposium – Grand Dalmatia

Symposium #266780

Long-term Forensic Psychiatric Care - COST Action IS1302

Ellen Vorstenbosch, Parc Sanitari Sant Joan de Deu (Spain)

Introduction COST Action IS1302
Peter Braun

Determination of patient characteristics
Harry G. Kennedy

Towards best practice in long-term forensic psychiatric care
Franco Scarpa

Meeting patient needs and optimizing quality of life
Ellen Vorstenbosch,

Long-stay in high and medium secure forensic psychiatric care – prevalence, patient characteristics and pathways in England
Birgit Völlm,



D4.4 - Suicide and Self-Harm – Lastovo

Paper #265842

Keeping focus: Using eye-tracking to identify decisional-style and risk cues used in suicide risk assessment

Jennifer Murray, Edinburgh Napier University (United Kingdom)

Laura Nedel Duarte, Edinburgh Napier University

Lindsey Carruthers, Edinburgh Napier University

Zoe Chouliara, Edinburgh Napier University

Mary Thomson, Northumbria University

Paper #266604

Prisoner suicide, self-harm and assault: new insights from England and Wales

Philip Howard, National Offender Management Service, UK (United Kingdom)

Paper #266800

The association between victimization, suicidal and violent behavior - comparing methods of analysis

Knut Rypdal, Haukeland University Hospital (Norway)

Stephen D. Hart, Simon Fraser University

Rolf Gjestad, Haukeland University Hospital

Helge Andreas Hoff, Haukeland University Hospital

Liv Mellesdal, Haukeland University Hospital

Ketil J. Oedegaard, Haukeland University Hospital

Stål Bjørkly, Oslo University Hospital, Centre for Forensic Psychiatry and Molde University College

Paper #265839

Prediction of compliance to self-harm command hallucinations in individuals with major mental disorders.

Jules Dugré, Department of Psychiatry, Université de Montréal (Canada)

Jean-Pierre Guay, Université de Montréal

Alexandre Dumais, Université de Montréal

If you're thinking about further education in forensic mental health, think about CFBS online study.

Graduate Certificate *and* Graduate Diploma in Forensic Mental Health Nursing.

Graduate Program in Forensic Behavioural Science.

Graduate Certificate in Specialist Forensic Assessment and Risk Management.

Led by Professor James R.P. Ogloff AM, the Centre for Forensic Behavioural Science (CFBS) is the Asia Pacific's leading centre for excellence in the areas of forensic mental health and forensic behavioural science research, teaching and practice development.

We offer online graduate degrees and single unit enrolments to forensic practitioners around the world. Admission to these programs is open to students with a relevant tertiary qualification or significant relevant work experience.

Single unit enrolments for specific topics are offered online in the following areas:

- Core skills in forensic practice
- Fundamentals of criminal law process
- Principles of violence risk assessment and management
- Advanced violence risk assessment and management
- Mental disorder and offending
- Working with difficult personalities in the forensic context
- Substance misuse and offending
- Problem behaviours
- Trauma and offending
- Forensic mental health nursing
- Working in corrections and youth justice
- Forensic issues across the lifespan.



Centre for Forensic
Behavioural Science



ENQUIRIES

swinburne.edu.au/forensic

T: (+61 3) 9214 5412

E: info-cfbs@swin.edu.au

swinburne.edu.au/postgrad



Concurrent session: E

Wednesday, June 14 10:15-11:30

E5.1 - Symposium – Hvar

Symposium #266753

Reorganising Forensic Care Pathways

Harry Kennedy, University of Dublin Trinity College (TCD) (Ireland)

Symposium: Reorganising Forensic Care Pathways

Harry G. Kennedy

Reorganising forensic care pathways in Belgium

Ingeborg Jeandarme

Therapeutic programme completion, risk and recovery in Broadmoor High Secure Hospital, England.

Mary Davoren

Clinical restructure of a forensic mental health service in New Zealand

Jeremy Skipworth

Need for care in high secure settings and the urgency of that need among referrals to Broadmoor High Secure Hospital, England.

Hannah Kate Williams

--- ∞ ---

E5.2 - Training and Education – Brac III

Paper #261797

The Role of Punishment Orientation in Jurors' Perceptions of the Insanity Defence

Evelyn Maeder, Carleton University (Canada)

Susan Yamamoto, Carleton University

Paper #262462

Front-line staff perspectives on mental health screening

Michael Martin, University of Ottawa (Canada)

Andrea Boucher, Carleton University and Correctional Services of Canada

Megan Potvin, Carleton University and Correctional Services of Canada

Paper #265553

Mitigating the Impact of Bias in Forensic Evaluation: Lessons from Forensic Science

Patricia Zapf, John Jay College of Criminal Justice (United States)

Itiel E. Dror, University College London

Paper #266624

Supervision - thoughts on early training issues

Anita McGregor, University of New South Wales (Australia)

Minh Nguyen-Hoan, University of New South Wales

E5.3 - Symposium - Korcula

Symposium #265464

Biomarkers of violence – Conceptual issues and research in Norway and Sweden

Stål Bjørkly, Faculty of Health and Social Sciences, Molde University College (Norway)

Biomarkers for violence – conceptual and implementation issues

Stål Bjørkly

Research on biological risk markers for violence: Serum cholesterol and platelet serotonin

John Olav Roaldset

Neural biomarkers for inhibitory control failure in externalizing behaviors and disorders

Carl Delfin

From Genes to Brain – different aspects of psychopathy

Katarina Howner

--- ∞ ---

E5.4 - Symposium – Vis

Symposium #265502

Offenders found not guilty for the reason of insanity

Goran Arbanas, University Psychiatric Hospital Vrapce (Croatia)

The judicial and psychiatric position of offenders found not guilty for the reason of insanity in the Republic of Croatia

Nadica Buzina

Sex offenders not guilty for the reason of insanity

Goran Arbanas

Mentally Ill Offenders in Austria

Alexander Dvorak

Italian reform of forensic psychiatry: a 2 years investigation on a national sample of subjects in security measures

Luca Castelli

Not Guilty by Reason of Insanity: An overview of Scotland's current legislation

Johanna Brown

E5.5 - Roundtable – Lastovo

Roundtable #266771

eHealth and Forensic Mental Health - What are the benefits, barriers and possibilities?

Hanneke Kip, University of Twente, Faculty of Behavioural, Management and Social Sciences, Center of eHealth and Wellbeing Research (Netherlands)

Yvonne Bouman

Anne Marike Halma

Lisette van Gemert-Pijnen

--- ∞ ---

E5.6 - Symposium – Brac III

Symposium #267249

A program for substance abuse in a high security forensic setting: history, implementation, results and program evaluation

Tiziana Costi, Institut Philippe Pinel de Montreal (Canada)

Introduction

Tiziana Costi

Description of the Program

Melissa Mc donald

The context

Marie Limoges-Mongeau

The results and the future

Tiziana Costi

--- ∞ ---

E5.7 - Violence Risk Assessment Measures – Brac I

Paper #264601

Do Risk Assessment Tools Help to Manage Risk of Violence and Reoffending?

Jodi Viljoen, Simon Fraser University (Canada)

Andrew L. Gray, Simon Fraser University

Melissa Johnson, Simon Fraser University

Dana Cochrane, Simon Fraser University

Paper #266025

Gender-sensitive violence risk assessment. Predictive validity of the FAM, HCR-20 V3, SAPROF, START and PCL-R in female forensic psychiatric patients

Vivienne de Vogel, De Forensische Zorgspecialisten (Netherlands)

Mieke Bruggeman, De Forensische Zorgspecialisten

Michiel de Vries Robbé, Van der Hoeven Kliniek, DFZS

Paper #267122

Protective factors for violence risk: an overview of international research findings with the SAPROF and SAPROF-YV

Michiel de Vries Robbé, Van der Hoeven Kliniek, DFZS (Netherlands)

Agnes Veldhuizen, Van der Hoeven Kliniek

Vivienne de Vogel, Van der Hoeven Kliniek

Paper #267246

Errors and correct decisions in a violence risk screening instrument

Melodie Foellmi, EAC Network (United States)

Barry Rosenfeld, Fordham University

Ali Khadivi, Bronx Lebanon Hospital

Alicia Nijdam-Jones, Fordham University

Charity Wijetunga, Fordham University

Merrill Rotter, Albert Einstein School of Medicine

--- ∞ ---

E5.8 Students panel – Grand Dalmatia

Collaborative research across disciplines.

Chaired by Alicia Nijdam-Jones

Invited panelists will speak about their international research programs and experiences in order to help guide student members on the process of collaborative research. Topics include the benefits of collaborating with other disciplines nationally and internationally, how to facilitate collaborations and engage in successful networking, and how to make the most of collaborations. Panelists will also provide specific examples and lessons from successful collaborations.

Panelists: Kevin Douglas
Mari Helene-Goulet
Jennifer Storey



MSc Forensic Mental Health

www.uws.ac.uk

www.forensicnetwork.scot.nhs.uk

- This **part time** and **international** programme will provide graduates with a **unique opportunity** to advance knowledge, enhance skills and gain a critical awareness of theoretical, methodological and practical issues in **forensic mental health**.
- Graduates will be equipped with the **confidence** to excel in any forensic mental health setting and will develop the **core skills** necessary to apply for **senior clinical or managerial positions**.
- The programme is suitable for **professionals** working with **mentally disordered offenders** with backgrounds in nursing, social care, psychology, occupational therapy, psychiatry, criminal justice and security.
- The course team consists of **experienced practitioners** and **academics** from a range of forensic settings.
- The course is delivered through **online distance learning**, enhancing its flexibility for practicing professionals and **international** students.

COURSE CONTENT

Students can opt to study the specialist forensic mental health modules individually for CPD purposes or as part of the Masters pathway, with the potential to graduate with a Postgraduate Certificate, Diploma or Masters degree (dissertation required).

MODULES:

- Mental Disorder and the Law (20 credits)
- Forensic Risk Assessment and Risk Management (20 credits)
- Drugs and Alcohol (10 credits)
- Managing Mental Health through the Criminal Justice System (10 credits)
- Problem Behaviours (30 credits)
- Forensic Treatments and Interventions (10 credits)
- Research for Health and Social Care (20 credits)
- Dissertation (60 credits)

ENTRY

Apply direct at www.uws.ac.uk/apply

CONTACT US...

UWS Course Enquiries Team
0800 027 10000
ask@uws.ac.uk
(+44 141 849 4101 outwith UK)

Forensic Network & SoFMH
01555 842212
tsh.forensicnetwork@nhs.net
Follow us on Twitter: **@FN_SoFMH**

Concurrent session: F

Wednesday, June 14 11:45-13:00

Special Interest Group:

- African Network – Brac I

--- ∞ ---

F6.1 - Symposium – Grand Dalmatia

Symposium #266816

Improving Outcomes for Mentally Ill Remand Prisoners.

Harry Kennedy, University of Dublin Trinity College (TCD) (Ireland)

Transfer of care on discharge from prison mental healthcare: Outcomes for 363 consecutive discharges from a remand prison, over a one year period.

Dr Jamie Walsh

STRESS-testing clinical activity and outcomes for a combined prison in-reach and court liaison service: A three-year observational study of 6177 consecutive male remands.

Conor O'Neill

A Synergistic Approach to Improving Outcomes for Homeless Mentally Ill Remand Prisoners

Damian Smith

--- ∞ ---

F6.2 - Roundtable – Vis

Roundtable #265947

Redesigning Forensic Care Pathways in England: The New Models Pilot Programme

Quazi Haque, Royal College of Psychiatrists Forensic Quality Network & Elysium Healthcare (United Kingdom)

Patrick Neville, recent head of NHSE Mental Health Portfolio, Elysium healthcare

Mary Harty, South London New Care Models

F6.3 - Symposium – Korcula

Paper #291317

The Next Generation of Risk Assessment and Management: The eHARM-FV One Year Later

Gary Chaimowitz, St Joseph's Healthcare (Canada)

Gary Chaimowitz

Katelyn Mullally

Mini Mamak

--- ∞ ---

F6.4 - Symposium – Lastovo

Symposium #265386

Groups for Alcohol-misusing Short-term Prisoners: the results of a randomised controlled trial

Pamela Taylor, Cardiff University (United Kingdom)

The context of our randomised controlled trial (RCT) of groups for alcohol-misusing short-term prisoners

Pamela J. Taylor

GASP: Design and statistical methods

Michael Robling

Process evaluation in the GASP trial

Yvonne Moriarty

The GASP trial: Sample description

Zoe Meredith & Natasha Kalebic

Relative changes over 4-6 weeks in self-reported locus of control of behaviour and mental state of men participating in the GASP trial

Rebecca Playle

--- ∞ ---

F6.5 - Symposium – Brac III

Symposium #266467

Spanning the boundaries of health, social and custodial care in prison

Katrina Forsyth, University of Manchester (United Kingdom)

The Older prisoner Health and Social Care Assessment and Plan (OHSCAP): A Randomised Controlled Trial

Katrina Forsyth

Social Care in Prison

Jenny Shaw

Dementia and Cognitive Impairment in the Prison Population of England and Wales: Identifying Individual Need and Developing a skilled, Multi-Agency Workforce to Deliver Targeted and Responsive Services

Laura Archer-Power

F6.6 - Personality & Violence – Hvar

Paper #261429

Distinct pathological profiles of inmates showcasing Cluster B personality traits regarding violent behaviors

Laura Dellazizzo, Department of psychiatry, Faculty of Medicine, Université de Montréal(Canada)

Jules R. Dugré, Université de Montréal

Marieke Berwald, Université de Montréal

Gilles Coté, Université de Québec à Trois-Rivières

Stéphane Potvin, Université de Montréal

Alexandre Dumais, Université de Montréal

Paper #263358

Minnesota Multiphasic Personality Inventory – 2 Predictors of Institutional Misconduct in Samples of Male and Female Offenders in Custody

Alfredas Laurinavicius, Vilnius University (Lithuania)

Ilona Cesniene, Vilnius University

Laura Ustinaviciute, Vilnius University, Mykolas Romeris University

Paper #267287

A Conceptual Analysis of Violence Risk Formulation for Psychopathic Personality Disorder

Dylan Gatner, Simon Fraser University (Canada)

Tara Ryan, Simon Fraser University

Kevin S. Douglas, Simon Fraser University

Stephen D. Hart, Simon Fraser University

Paper readmitted to program

Bridging risk-management from secured clinical settings to outpatient rehab and specific subpopulation patients; An international perspective on the Early Recognition Method.

Frans Flutter, Dr.S.van Mestag (Netherlands)

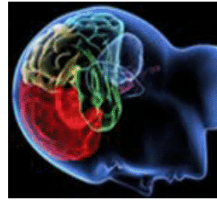
Gunnar Eidhammer, Oslo University Hospital (Norway)

Kirsten Johansen Katballe, University of Southern Denmark (Denmark)

Forensic Psychiatry Program

St. Joseph's Healthcare Hamilton (West 5th Campus)
100 West 5th Street, Hamilton, Ontario Canada L8N 3K7
www.stjoes.ca

Dr. Gary Chaimovitz, Head of Service & Academic Lead
Marilyn Bakers-Hayward, Director of Clinical Services



Forensic Psychiatry Institute

An institute held in a picturesque setting designed to cultivate stimulating discussion among professionals working in the forensic mental health system



AIS & E-HARM

Advancing risk assessment and management through analytics, using the Aggressive Incidents Scale and Electronic Hamilton Anatomy of Risk Management, available in 8 languages

ais-harm.com



Risk & Recovery Forensic Conference

An international conference for professionals in mental health, probation & parole, corrections, legal services and police

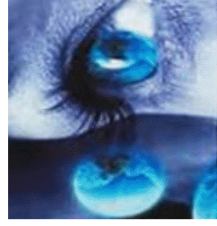
riskandrecoveryconference.com



Radical Collaborations Research Day

An innovative conference designed to foster radical research concepts and interdisciplinary connections

psychiatry.mcmaster.ca



Research & Innovation Awards

A range of grants available to interdisciplinary professionals aimed to advance learning and research in the field of Forensic Psychiatry

research.stjoes.ca

Concurrent session: G

Wednesday, June 14 15:15-16:30

Special interest groups:

- RISC Team - Brac I
- Long-Term Care – Brac III

--- ∞ ---

G7.1 - Symposium – Brac II

Symposium #266813

National Recovery Initiatives in the UK - symposium

Ian Callaghan, Rethink Mental Illness (United Kingdom)

The Recovery and Outcomes programme - a national initiative in the UK

Ian Callaghan

Evaluation of the Recovery and Outcomes network

Mick McKeown

Innovation in Care and Risk planning in UK secure services: the Rethink Mental Illness Innovation Network secure care programme

Charli Hadden

--- ∞ ---

G7.2 - Symposium – Vis

Symposium #266635

The prevalence and course of cognitive impairment in mentally ill offenders; relevance for assessing and managing risk across offending populations

Suzanne O'Rourke, University of Edinburgh

Neuropsychological impairment in Mentally Ill Offenders is severe and pervasive

Suzanne O'Rourke

Cognitive Decline in Mentally Ill Offenders and the Implications for Risk of Violence: A 10-12-year Follow-up Study

Sarah Brown

Cognitive Contributors to Violent Risk: A Systematic Review and Meta-Analyses

Sarah Janes

G7.3 - Roundtable – Korcula

Roundtable #0

What are protective factors and what do you do with them?

Ed Hilterman, Justa Mesura (Spain)

Michiel de Vries Robbé, Van der Hoeven Kliniek

--- ∞ ---

G7.4 - Assessment – Hvar

Paper #262468

Mental health screening and access to treatment

Michael Martin, University of Ottawa (Canada)

Beth K. Potter, University of Ottawa

Anne G. Crocker, Université de Montréal

George A. Wells, University of Ottawa

Ian Colman, University of Ottawa

Paper #265443

Have you ever been diagnosed with a mental disorder? Concurrent validity of psychiatric history taking in a prison setting.

Daria Korobanova, Justice Health & Forensic Mental Health Network (Australia)

Kimberlie Dean, University of New South Wales

Paper #265549

Measuring disability amongst forensic mental health in-patients with schizophrenia.

Padraic O Flynn, National Forensic Mental Health Service - HSE (Ireland)

Roisin O' Regan, National Forensic Mental Health Service - HSE

Paper #266594

No idle threat: Precursors to action in threateners with mental disorders.

Melanie Mitchell, Psychologist (Australia)

Gavan Palk, Psychologist

--- ∞ ---

G7.5 – Mental Health Training & Education – Lastovo

Paper #262518

Suicide by mental health in-patients under observation

Sandra Flynn, University of Manchester (United Kingdom)

Thabiso Nyathi, Greater Manchester West NHS Trust

Su-gwan Tham, University of Manchester

Alyson Williams, University of Manchester

Kirsten Windfuhr, Healthcare Improvement Quality Partnership

Nav Kapur, University of Manchester

Louis Appleby, University of Manchester

Jenny Shaw, University of Manchester

Paper #265371

Relational Discovery: A relationally-focused model for systemic culture change in forensic mental health settings

Louise Yorke, Psychology Lead, Inpatient Services Langdon Hospital, Devon Partnership Trust (United Kingdom)
Malinder K. Bhullar, Devon Partnership Trust
Brian Darnley, Devon Partnership Trust

Paper #266458

Mental health and policing: An evaluation of a Canadian police department Mental Health Strategic Action Plan

Julie Prince-Dagenais, Université de Québec à Trois-Rivières (Canada)
Edwige Lafortune, University of Montreal
Laurie Galardo, University of Montreal
Jeanne-Maude Hamelin-Fortin, University of Quebec in Montreal

Paper #261825

What do we tell patients about sex? An analysis of patients' views on communications from staff about sex and sexuality.

Paul Withers, NHS (United Kingdom)



G7.6 - In-patient Violence – Grand Dalmatia

Paper #265997

Inpatient violence in a Dutch forensic psychiatric hospital: prevalence and characteristics

Nienke Verstegen, Van der Hoeven Kliniek (Netherlands)
Vivienne de Vogel, Van der Hoeven Kliniek
Michiel de Vries Robbé, Van der Hoeven Kliniek

Paper #266560

Validation of the LOCUS Tool in Assessing Risk and Transition Readiness in a Forensic Psychiatric Population

Elizabeth Coleman, University of Toronto (Canada)
Phil Klassen, Ontario Shores

Paper #266882

Dangerous forensic psychiatric in-patients own views on perceived dangerousness and rehabilitation

Charlotte Pollak, Karolinska Institutet (Sweden)
Tom Palmstierna, Karolinska Institutet

Paper #266934

Predicting inpatient violence using Watson Explorer and Big Data: The future of forensic research?

Phil Klassen, Ontario Shores (Canada)
Elizabeth Coleman, University of Toronto

Concurrent session: H

Thursday, June 15 10:15 - 11:30

H8.1 - Symposium – Grand Dalmatia

Symposium #266688

Clinical outcomes for people with Intellectual Disabilities detained in secure forensic services: A European perspective

Deborah Morris, Clinical Psychologist, St Andrews Healthcare, UK. (United Kingdom)

Clinical outcomes from a UK specialist Learning Disability Forensic Service: What constitutes a meaningful clinical outcome?

Deborah Morris

And don't you come back no more – discharge of intellectually disabled offenders from forensic psychiatric hospitals

Martin Neumann

Outcomes and recidivism for Learning Disabled offenders in the Spanish prison system

Vincente Tort Herrando

--- ∞ ---

H8.2 - Symposium – Brac I

Symposium #266877

Parental Acceptance-Rejection and Psychopathy: A symposium discussing the findings between perceived parental acceptance-rejection and multiple self-report psychopathy measures.

Evan Norton, Alliant International University, San Diego (United States)

The Relationship Between the Parental Acceptance-Rejection Questionnaire (Maternal Form) and the Psychopathic Personality Inventory-Revised

Evan S. Norton, M.A.

The Relationship Between the Parental Acceptance-Rejection Questionnaire (Maternal and Paternal Forms) and the Self-Report Psychopathy Scale 4th Ed.

Evan S. Norton M.A.

Exploratory Factor Analysis of Parental Acceptance-Rejection and Self-Report Psychopathy Measures

Kori Ryan Psy.D, Robert Lark Ph.D

H8.3 – Use of Restrictive and Segregation Interventions – Brac III

Paper #265844

Forensic Mental Health Services Restrictive Intervention Benchmarking

Tessa Maguire, Swinburne University of Technology (Australia)

Jo Ryan, Forensicare

Brian McKenna, Auckland University of Technology

Paper #266325

The Hope(S) Clinical Model to Reduce Long Term Segregation in Secure Hospitals

Jennifer Kilcoyne, NHS Trust (United Kingdom)

Paper #266450

Patient Profiles and the Use of Seclusion in a Forensic Psychiatric Hospital

Catherine Wilson, University of British Columbia & BC Mental Health and Substance Use Services (Canada)

Tonia L. Nicholls, University of British Columbia & BC Mental Health and Substance Use Services

Johann Brink, University of British Columbia

Michelle Pritchard, University of British Columbia

Paper #266587

Solitary confinement, access to services and community reintegration of mentally ill federal inmates

Leila Salem, University of Massachusetts Boston (United States)

Anne G. Crocker, Université de Montréal

Gilles Côté, Université du Québec à Trois-Rivières

Sophie-Anne Dufour, Université de Montréal



H8.4 - Symposium – Hvar

Symposium #265225

Current Critical Issues in Forensic Mental Health Services

Nichola Tyler, University of Kent and Kent & Medway NHS Trust (United Kingdom)

‘You need to meet with the psychologist before you have any leave’ – An exploration of Coercion in a low secure forensic mental health service

Helen Miles

Offence Related Trauma: Understanding Patients Experiences Using Interpretative Phenomenological Analysis -

Grace Rew

How Staff Support Procedures have Aided in Recovery Following Incidents of Abuse Experienced in Low Secure Forensic Inpatient Services

Sarah Cooper

A Qualitative Exploration of Firesetting Conducted by Adults with Intellectual Disabilities: A Grounded Theory Approach

Andy Inett

H8.5 - Symposium – Vis

Symposium #265593

Delivering the Five Modes of Dialectical Behaviour Therapy in a Forensic Setting

Kristy Summers, Partnerships in Care (United Kingdom)

DBT Consultation Team: Longevity, challenges, and opportunities

Zoe Otter

Implementation of the 'new' Dialectical Behaviour Therapy (DBT) Skills Manual in a Female Medium Secure Service in the UK – Facilitator and Patient Reflections

Kristy Summers

Adapted Dialectical Behaviour Therapy (DBT) Programme for Individuals with Intellectual Disabilities and Problems

Managing Emotions: Staff Awareness Training

Sarah Ashworth



H8.6 - Offender Services & Management – Korcula

Paper #266231

The Contional TBS Order in the Netherlands: A comparison between patients who are treated successfully and those who fail

Marleen Nagtegaal, Ministry of Security and Justice (Netherlands)

Paper #266653

Experiences of pregnancy, childbirth and motherhood of women in prison in England

Rachel Dolan, University of Manchester (United Kingdom)

Paper #266690

Mobile applications in forensic practice: Why should we start using them and what are the risks?

Cornelia Carey, National Forensic Service, Dublin (Ireland)

Lisa McLoughlin, National Forensic Service, Dublin

Ian McLoughlin, Galway Mayo Institute of Technology

Harry G. Kennedy, National Forensic Mental Health Service, Dublin and Trinity College Dublin

Paper #266931

A 3 year evaluation of nursing staffs' physical health monitoring for admissions in Low/Medium secure services across 2 Health Trusts

Sanjib Ghosh, Queen Mary University of London & East London Foundation Trust (United Kingdom)

Nodira Nasritdinova, east London NHS Foundation Trust

Laura Samso, Barnet Enfield and Haringey NHS Trust

Nargiza Saldova, East London Foundation Trust

H8.7 - Program Evaluation I – Lastovo

Paper #264902

Implementation of the CORE-34 as a routine outcome measure in a high secure forensic setting

Natasha Purcell, Principal Clinical Psychologist, the State Hospital (United Kingdom)

Lindsey Gilling McIntosh, University of Edinburgh

Paper #265448

Police and Northwestern Mental Health Triage Service - Greater Knowledge Leads to Less Action

Jolene Geh, Northwestern Mental Health (Australia)

Harry Johnstone, Northwestern Mental Health

Paper #266617

Evaluation of cultural competence of staff in a secure mental health service using a validated self-assessment tool: A feasibility study.

Piyal Sen, Elysium Healthcare and King's College, London (United Kingdom)

Ryan Bailey, St Andrew's Essex

Arabinda Chowdhury, University of Tripura

Mary-Maria Johnson, St. Andrew's Essex

Nadine Myers, King's College London

Marco Picchioni, King's College London

Lucinda Robertson, St Andrew's Essex

Agatha Wojdylak, King's College London

Doreen Kageha, King's College London

Paper #266666

Changing attitudes: the effect of a training course on a forensic psychiatric units staffs attitudes

Neringa Aasdal, Mental Health Center Sct.Hans (Denmark)

Tine Wøbbe

INTERNATIONAL PERSPECTIVES ON FORENSIC MENTAL HEALTH

Edited by
Ronald Roesch
and Alana N. Cook

Handbook of Forensic Mental Health Services



June 2017: 6 x 9: 640pp

Hb: 978-1-138-64594-3 | \$295.00

Pb: 978-1-138-64595-0 | \$119.95

eBook: 978-1-315-62782-3

TABLE OF CONTENTS:

Preface I: Introduction 1. Forensic Mental Health Internationally Anne G. Crocker, James D. Livingston, and Marichelle C. Leclair II: Forensic Mental Health Assessment 2. Criminal Forensic Assessment Amanda L. Reed and Patricia A. Zapf 3. Civil Forensic Assessment Laura S. Guy and Amanda D. Zelechowski 4. Violence Risk Assessment Across Nations and Across Cultures: Legal, Clinical, and Scientific Considerations Appendix Alana N. Cook and Stephen D. Hart 5. Formulation for Forensic Practitioners Caroline Logan 6. The Role of Protective Factors in Forensic Risk Assessments Simone Viljoen, Jodi Viljoen, Tonia L. Nicholls, and Michiel de Vries Robbé 7. Forensic Report Writing: Principles and Challenges Richard L. DeMier and Randy K. Otto III: Forensic Mental Health Interventions 8. Models of Change and the Use of Prevention and Early Interventions Lucy Guarnera and N. Dickon Reppucci 9. Change to The Fullest Potential: Doing What Works in the Forensic Context Heather M. Moulden and Casey Myers 10. Treatment of Personality Disorders In Forensic/Correctional Settings Michelle Guyton and Allison Foerschner 11. Treatment of Sexual Offenders Rebecca Jackson 12. Intellectual Disability Among Offenders in Correctional and Forensic Setting Kaitlyn McLachlan 13. Female offenders Vivienne DeVogel and Marijke Louppen 14. Juvenile Offender Treatment Keith Cruise, Evan Holloway, and Emilie Picar IV: Forensic Mental Health Systems 15. Implementation of Evidence-based Practices in Forensic Mental Health Services Rüdiger Müller-Isberner, Petra Born, Sabine Eucker, and Beate Eusterschulte 16. Forensic Mental Health in Corrections Robert D. Morgan, Angelea Bolanos, and Karen Grabowski 17. Guidelines for Forensic Mental Health in Inpatient Psychiatric Settings Tonia L. Nicholls and Ilvy Goossens 18. Diversion and the Sequential Intercept Model: Implications For Emerging Forensic Service Areas Kirk Heilbrun, Patricia A. Griffin, Edward Mulvey, David DeMatteo, Carol Schubert, Katy Winckworth Prejsnar, Sarah Phillips, and Sarah Filone 19. Mental Health Courts: Where Might We Go From Here? Richard D. Schneider

20% discount off with this flyer!

Handbook of Forensic Mental Health Services

Edited by **Ronald Roesch**, Simon Fraser University, Burnaby, BC, Canada and **Alana N. Cook**, Department of Psychology, Simon Fraser University, Burnaby, BC

Series: International Perspectives on Forensic Mental Health

Handbook of Forensic Mental Health Services focuses on assessment, treatment, and policy issues regarding juveniles and adults in the criminal and civil systems. Uniquely, this volume is designed for professionals who deliver mental health services, rather than researchers. Just like its parent series, its goal revolves around improving the quality of mental health care services in forensic settings. It achieves this by integrating the findings related to clinical practice, administration, and policy from trends and best practice internationally that mental health professionals can implement.

20% Discount Available - enter the code IRK71 at checkout*

Hb: 978-1-138-64594-3 | \$236.00

Pb: 978-1-138-64595-0 | \$95.96

**Offer cannot be used in conjunction with any other offer or discount and only applies to books purchased directly via our website.*

For more details, or to request a copy for review, please visit <https://goo.gl/6BgN7g>.

 **Routledge**
Taylor & Francis Group

For more information visit:
www.routledge.com/9781138645950

Concurrent session: I

Thursday, June 15

12:00-13:15

19.1 - Issues in Cultural Assessment – Brac I

Paper #265325

A Cross-Cultural Analysis of the Test of Memory Malingering among Latin American Spanish-Speaking Adults

Alicia Nijdam-Jones, Fordham University (United States)

Diego Rivera, Surcolombiana University

Barry Rosenfeld, Fordham University

Juan Carlos Arango-Lasprilla, Cruces University Hospital

Paper #265428

Cultural identity, unmet needs in custody and recidivism: An Australian analysis

Stephane Shepherd, Centre for Forensic Behavioural Science, Swinburne University of Technology (Australia)

Paper #266592

The face validity of the DUNDRUM-3 and DUNDRUM-4 structured clinical judgment instruments: A Māori Participatory Action Research perspective.

Brian McKenna, Auckland University of Technology (New Zealand)

Nick Wiki, Auckland Regional Forensic Psychiatry Services

James Cavney, Auckland Regional Forensic Psychiatry Services

Trudie Field, Auckland Regional Forensic Psychiatry Services

Erana Cooper, The Flying Doctors – Nga Manu Aarahi

Julie Wharewera-Mika, The Flying Doctors – Nga Manu Aarahi

Paper #266590

Description of an indigenous forensic mental health secure rehabilitation service: A case study of Te Pāpākāinga o Tāne Whakapiripiri

Brian McKenna, Auckland University of Technology (New Zealand)

Nick Wiki, Auckland Regional Forensic Psychiatry Services

James Cavney, Auckland Regional Forensic Psychiatry Services

Trudie Field, Auckland Regional Forensic Psychiatry Services

Erana Cooper, The Flying Doctors – Nga Manu Aarahi

Julie Wharewera-Mika, The Flying Doctors – Nga Manu Aarahi

--- ∞ ---

19.2 - Symposium – Grand Dalmatia

Symposium #260950

Children of parents detained in secure hospitals

Pamela Taylor, Cardiff University (United Kingdom)

Children separated from a parent who is mentally ill, criminally violent and locked in a secure hospital: setting the scene

Pamela J. Taylor

How many parents in secure hospitals and how many children are separated by the admission?

Sarah Argent

Patient-parents' perceptions of their parenting role and their children's needs.

Fiona Parrott

The nature of current service provision for children of parents in secure hospitals

Jacqueline Mansfield

The lived experience of children of parents in secure hospitals: building from what is already in the literature

Molly Houston

Children of mentally ill or incarcerated parents and the experience of stigma

Thomas Casey

--- ∞ ---

I9.3 - Symposium - Vis

Symposium #265219

Physical Health Care Concerns of Mentally Disordered Offenders in the United Kingdom

Helen Walker, Forensic Network (United Kingdom)

'Physical Health Matters'

Helen Walker

Prioritising and supporting early access to opportunities for Physical Activity for newly admitted High Secure

Forensic Inpatients

Jamie Pitcairn

--- ∞ ---

I9.4 - Treatment Engagement & Special Topics – Brac III

Paper #252466

Faith in thy Threshold: an empirical analysis of juror decision making and information integration

Lee Curley, Edinburgh Napier University (United Kingdom)

Rory Maclean, Edinburgh Napier University

Jennifer Murray, Edinburgh Napier University

Phyllis Laybourn, Edinburgh Napier University

Paper #262439

Motivators for Engagement in Group Offending Behavior Programs

Emma Holdsworth, Coventry University (United Kingdom)

Erica Bowen, National Centre for the Study and Prevention of Violence and Abuse, University of Worcester

Sarah Brown, Coventry University

Douglas Howat, Coventry University

Paper #265256

Factor profiles linked to treatment motivation among inmates

Sophie-Anne Dufour, Université de Montréal (Canada)

Gilles Côté, Université du Québec à Trois-Rivières

Paper #265552

Engaging offenders with mental health problems after release: What are the elements of good practice and how do they 'work'?

Charlotte Lennox, University of Manchester (United Kingdom)

Jenny Shaw, University of Manchester

Richard Byng, University of Plymouth

Cath Quinn, University of Plymouth

Christabel Owens, University of Exeter

--- ∞ ---

19.5 - Family and Careers – Hvar

Discussants: Quazi Haque and session presenters

Paper #262218

*Working with families in secure forensic Learning Disability services:
The outcomes of a family support service.*

Deborah Morris, Clinical Psychologist, St Andrews Healthcare, UK. (United Kingdom)

Michael Hand, St Andrew's Healthcare

Stainton Stewart, St Andrew's Healthcare

Paper #265949

Quality Improvement in Forensic Services: Involvement of Families and Carers

Quazi Haque, Institute of Psychiatry (United Kingdom)

Paper #266658

Family carers and secure mental health services

Mick McKeown, University of Central Lancashire (United Kingdom)

Fiona Edgar, Community Futures

Julie Ridley, University of Central Lancashire

Sheena Foster, Family Carer

Sue Steward, Family Carer

Karin Machin, Researcher

--- ∞ ---

19.6 - Community Reintegration – Lastovo

Paper #255115

Boston offender needs and delivery program

Leila Salem, University of Massachusetts Boston (United States)

Stephanie W. Hartwell, University of Massachusetts

Paper #266880

Beyond the Walls: An Evaluation of Ireland's First Pre-Release Planning Programme for Mentally Ill Sentenced Prisoners.

Damian Smith, National Forensic Mental Health Service and Trinity College Dublin (Ireland)

Damian Mohan, National Forensic Mental Health Service and Trinity College Dublin

Harry G. Kennedy, National Forensic Mental Health Service and Trinity College Dublin

Paper #267302

Examination of an Enhanced Reentry Program Designed to Assess and Address the Criminogenic Needs of a Co-Occurring Civil Commitment Population

Lillian Bopp, EAC Network (United States)

I9.7 - Symposium – Korcula

Symposium #263160

When Self Control Gets Out of Control: A New Approach to Understanding, Assessing and Treating Over-Controlled Conditions in Offenders.

Laura Hamilton, Rampton Hospital & Nottingham Trent University (United Kingdom)

Using Evidenced-Based Transdiagnostic Theory to Guide Clinical Decision-Making

Sophie Rushbrook

Distinguishing Overcontrolled and Undercontrolled Personality: Issues in Misdiagnosis & A New Over- and Under-control Trait Rating Scale

Roelie Hempel

It's time to revisit the idea of the over-controlled offender: Examining Lynch's new over-control theory in a sample of severely personality disordered offenders.

Laura Hamilton

Concurrent session: J

Thursday, June 15 15:15 - 16:30

J10.1 - Evaluating Mental Health Treatment – Hvar

Paper #265195

Adaptation or Adherence in Dialectical Behaviour Therapy for the Learning Disability Population: The clinical outcomes of an Adherent approach

Deborah Morris, Clinical Psychologist, St Andrews Healthcare, UK. (United Kingdom)

Claudia Camden-Smith, St. Andrews Healthcare

Paper #265246

Systematic review and meta-analysis of structured psychological interventions for forensic psychiatric inpatients

Lindsey Gilling McIntosh, University of Edinburgh; State Hospital, Carstairs, (United Kingdom)

Sarah Janes, University of Edinburgh

Morag Slessor, The State Hospital, Carstairs

Suzanne O'Rourke, University of Edinburgh

Lindsay D.G. Thomson, University of Edinburgh and The State Hospitals Board for Scotland and Forensic Network

Paper #266694

Shame Coping Styles in Female Forensic Patients: The Compass of Shame Scale

Zoe Otter, Partnerships in Care (United Kingdom)

Paper #267336

Community Forensic Teams in the UK: evaluation of the roles of the CFT and how these can be effectively fulfilled

Sarah Flury, Criminal Justice and Forensic Mental Health Service, Hertfordshire Partnerships University NHS Foundation Trust (United Kingdom)

Jasbir Dhillon, University of Hertfordshire

Emma Hill, King's College London

Komal Oza, King's College London

Michael Shortt, Criminal Justice and Forensic Mental Health Service, Hertfordshire Partnerships University NHS Foundation Trust

Paper #265555

Comparing quality of forensic psychiatric care in Denmark and Sweden

Lars-Olov Lundquist (Sweden)

--- ∞ ---

J10.2 - Intimate Partner Violence II – Korcula

Paper #261320

Developing the evidence-base in understanding and explaining revenge pornography.

Kate Walker, Coventry University (United Kingdom)

Emma Sleath, Coventry University

Paper #266684

Sexual behaviours and experience of intimate partner violence in men and women with an intellectual disability detained in secure settings

Claudia Camden-Smith, St Andrew's Hospital (United Kingdom)

Deborah Morris, St. Andrew's Hospital

Robert Batten, St. Andrew's Hospital

Paper #

Some Characteristics of Victims of Domestic Violence

Tina Peraica, University Hospital Dubrava (Croatia)

From symposia #266478

Recidivism in intimate partner violence among antisocial and family-only perpetrators

Joakim Petersson, M.Sc.

--- ∞ ---

J10.3 - Public Policy & Legal Issues – Brac I

Paper #258075

The legal position of Dutch forensic mental health patients; balancing safety, treatment and legal protection

Michiel van der Wolf, Erasmus School of Law (Netherlands)

Sanne Struijk, Erasmus School of Law

Paper #261010

Legislation as a driver of change in forensic mental health services:

Appeals against detention in conditions of excessive security

Lindsay Thomson, The University of Edinburgh, and The State Hospitals Board for Scotland and Forensic Network (United Kingdom)

Chloe Roy, NHS Lothian

Alex Slater, NHS

Daniel Bennett, NHS Grampian and University of Aberdeen

Paper #265218

Renewed forensic law in Germany in 2016

Angelika Marc, Vitos Klinik für forensische Psychiatrie Haina (Germany)

Paper #266876

Stakeholders' perception of treatment orders: a systematic review of the qualitative evidence

Marie-Hélène Goulet, Douglas Mental Health University Institute, McGill University (Canada)

Anne G. Crocker, Université de Montréal

--- ∞ ---

J10.4 - Special Issues in Violence Risk Assessment – Grand Dalmatia

Paper #265237

Factors to focus on/ elaborate while using the HCR20 for patients with Autism Spectrum Condition

Carlo Thomas, St Andrews Healthcare (United Kingdom)

Azania Thomas, St. Andrews Healthcare

Paper #266277

The Effects of Head Injury on Risk-related Outcomes and Self-harm in Forensic Psychiatric Hospitals across Scotland

Sarah Brown, University of Edinburgh (Scotland)

Suzanne O'Rourke, University of Edinburgh

Matthias Schwannauer, University of Edinburgh

Paper #266511

Violence Risk Assessment of Indigenous Peoples: Lessons From Ewert v. Canada

Stephen Hart, Simon Fraser University (Canada)

Paper #266834

Item Level Analysis of the MacArthur Community Violence Screening Instrument

Joel Cartwright, North Carolina State University/RTI International (United States)

Sarah Desmarais, North Carolina State University

Adam Meade, North Carolina State University

Kiersten Johnson, RTI International

Kevin Grimm, Arizona State University

Stephen Tueller, RTI International

Marvin Swartz, Duke University Medical Center

Richard A. Van Dorn, RTI International

--- ∞ ---

J10.5 - Violence Risk: Special Groups – Vis

Paper #253920

Examining extremist violence profiles and intervention strategies

Martine Herzog-Evans, Reims University (France)

Marije Keulen-de Vos, Forensic Psychiatric Center 'de Rooyse Wissel'

Sophie Berjot, Reims University

Massil Benbouriche, Wayne State University

Paper #264917

Mental disorder in people convicted of homicide: a national clinical survey

Sandra Flynn, University of Manchester (United Kingdom)

Nav Kapur, University of Manchester

Louis Appleby, University of Manchester

Jenny Shaw, University of Manchester

Paper #265534

The effects of gang membership on self-conscious emotions, mental ill health, victimisation and violence: A systematic review of the literature

Sarah Osman, University of Kent (United Kingdom)

Jane Wood, University of Kent

Paper #266001

Patterns of criminal justice involvement among homeless persons with mental illness

Anne Crocker, Université de Montréal (Canada)

Ashley J. Lemieux, McGill University

Laurence Roy, McGill University

Tonia L. Nicholls, University of British Columbia/BC Mental Health and Substance Use Services

Marichelle Leclair, McGill University

J10.6 - Program Evaluation II – Brac III

Paper #265822

HMP Grendon Therapeutic Community and what 'works': The residents experience

Rachel Dolan, University of Manchester (United Kingdom)

Paper #266550

A mixed choir of staff and patients to fight stigmatization in a forensic hospital

Tiziana Costi, Institut Philippe Pinel de Montreal (Canada)

Paper #266627

Update to the evaluation of a low-intensity psychological intervention at Scotland's high-secure hospital: Four years On the Road to Recovery

Natasha Purcell, Principal Clinical Psychologist, the State Hospital (United Kingdom)

Lindsey Gilling McIntosh, University of Edinburgh

Lindsay D.G. Thomson, University of Edinburgh

Paper #267059

Life minus Violence = Life minus Violence?

Martin O'Hanlon, The State Hospital, Carstairs (United Kingdom)

Louise Kennedy, The State Hospital, Carstairs



PRATO

Tuscany, Italy. 4–6 October 2017

Safer Communities, Safer Relationships: Generating Solutions for Reducing Persistent Violence and Other Serious Offending

Persistent violence and other serious offending behaviour has a devastating effect on victims, family members, society and the perpetrators themselves. Finding effective solutions to reduce the incidence and severity of offending requires a cross-disciplinary focus. Only with a concerted and ongoing effort can we succeed in reducing the effects of these behaviours in our societies.

This international conference, co-hosted by Prof. Rosemary Sheehan AM (Department of Social Work, Monash University) and Prof. James Ogloff AM, brings together policy contributors, interdisciplinary practitioners, decision makers, advocates, and researchers to examine various aspects of serious offending and violence. The aim of the conference is to share research, practice and policy developments; to stimulate critical examination of the multifaceted causal issues; and to foster ongoing learning and collaborations.

The conference will give particular attention to:

- Understanding violence and other serious offences
- Desistance from crime and community reintegration
- Effective law and policy developments for managing and reducing offending
- Intimate partner and family violence
- Solutions for severe and persistent young offenders
- 'Crossover kids' – from protection to offending
- Origins of violence and its life course
- Neurobiology of violence
- Mental illness, substance misuse, disability and violence
- Effective interventions with perpetrators
- Family law
- Child protection.

Abstracts are now invited on these themes and other relevant topics.

Instructions and a template are on the conference website.

Keynote Speakers

Judge Tony FitzGerald
Professor Danya Glaser
Professor Paul Mazerolle
Emeritus Professor Mary McMurrin
Professor James Ogloff AM
Professor Lindsay Thomson

Conference venue

The conference will be held at the Monash University Centre in Prato, in the beautiful 18th century Palazzo Vaj, just 20 minutes from Florence, in Tuscany, Italy.

Information

Conference website:

www.swinburne.edu.au/prato2017

Further information about the conference will be posted on the website in the coming weeks. If you wish to be notified of updates, or have any queries please contact us on: **info-cfbs@swin.edu.au**

**CALL FOR
ABSTRACTS**
CLOSING DATE
FOR ABSTRACTS:
30 JUNE 2017



Centre for Forensic
Behavioural Science



Poster sessions

Tuesday, June 13 - 10:45 - 11:15

Wednesday, June 14 - 14:00 - 15:15

-Grand Dalmatia-

Topic : Education and training.

Poster - #266759

Addressing the Mental Health Needs of Inmates at Toronto South Detention Centre through Services and Education.

Kiren Sandhu, Centre for Addiction Mental Health (Canada)
Shaheen Darani, Centre for Addiction and Mental Health
Alexander Simpson, Centre for Addiction and Mental Health
Kiran Patel, Centre for Addiction and Mental Health
Tanya Connors, Centre for Addiction and Mental Health
Sarah Moss, Centre for Addiction and Mental Health

Topic : Forensic assesment

Poster - #263612

*Advancing Risk Assessment through Analytics:
Preliminary Findings from the eHARM-FV*

Katelyn Mullally, St. Joseph's Healthcare Hamilton (Canada)
Gary Chaimowitz, St. Joseph's Healthcare Hamilton
Mini Mamak, St. Joseph's Healthcare Hamilton
Demetriooff Sabrina, Winnipeg Regional Health Authority
Waldman Jeffrey, Winnipeg Regional Health Authority

Poster - #265106

Presentence Reports and Sentencing Comments: An Examination of Forensic Mental Health Reports in Sentencing Decisions

Mingwai Tam, Swinburne University of Technology and Center for Forensic Behavioral Science (Australia)
Michael Daffern, Center for Forensic Behavioral Science and Swinburne University of Technology
James Ogloff, Centre for Forensic Behavioural Science Swinburne University of Technology; Victorian Institute of Forensic Mental Health (Forensicare); Centre for Forensic Behavioural Science and Swinburne University of Technology

Poster - #265462

International comparisons of patients and staff views of quality in psychiatric care with the QPC instrument

Agneta Schrøder, University Health Care Research Center, Ørebro University, and Department of Nursing, Faculty of Health Care and Nursing, NTNU, Gjøvik, Norway (Sweden)
Lars-Olov Lundqvist, University Health Care Research Center, Ørebro University

Poster - #265470

The use of interpreters in forensic psychological assessments

Kobus Coetzee, University of Pretoria (South Africa)

Poster - #265994

Cognitive impairments in forensic psychiatric patients

Sylwia Joanna Chlopicka, Lund University, Department of Clinical Sciences in Lund, Lund, Sweden; Regional Forensic Psychiatric Clinic, Växjö, Sweden (Sweden)

Poster - #266657

The Application of SIMS in Victims of Intimate Partner Violence

Natalia Hidalgo-Ruzzante, University of Granada; The Mind, Brain, and Behaviour Research Center; Instituto Jurídico Portucalense

Julia C. Daugherty, University of Granada; The Mind, Brain, and Behaviour Research Center; Instituto Jurídico Portucalense

Maribel Marín Torices, University of Granada; The Mind, Brain, and Behaviour Research Center; Instituto Jurídico Portucalense

Miguel Pérez-García, University of Granada; The Mind, Brain, and Behaviour Research Center; Instituto Jurídico Portucalense

Poster - #266727

Quality of Life (QOL): What contribution to the Good Lives Model (GLM)?

Xavier Saloppé, Centre de Recherche en Défense Sociale; Université de Lille, SCALab CNRS UMR 9193; Service de psychiatrie, Hôpital de Saint-Amand-les-Eaux

Thierry Pham, Centre de Recherche en Défense Sociale, Université de Mons; Institut Philippe Pinel de Montreal
Pierre Oswald, CRP Les Marronniers, Université de Mons

Poster - #266929

Neuropsychological profile of Belgian forensic patients with Intellectual Disability

Audrey Vicenzutto, assistant - PhD student (Belgium)

Laurent Lefebvre

Thierry Pham, Centre de Recherche en Défense Sociale, Université de Mons; Institut Philippe Pinel de Montreal

Topic : Intimate partner/family violence

Poster - #265311

Screening for ADHD Among Offenders of Intimate Partner Violence

Nannet Buitelaar, de Waag Nederland (Netherlands)

Robert F. Ferdinand, de Waag Nederland

Jocelyne A Posthumus, Expertisecentrum Forensische Psychiatrie

Jan K. Buitelaar, Radboud Universiteit Nijmegen

Poster - #266326

Bias in judgement of familial homicide cases

Linda Karlsson, Åbo Akademi University (Finland)

Tuulia Malen, University of Turku

Johanna Kaakinen, University of Turku

Jan Antfolk, Åbo Akademi University

Poster - #266731

Hair cortisol differences between batterers and non batterers

María Ángeles García-León, Center of Research Mind, Brain and Behavior (CIMCYC). University of Granada (Spain).

Maria Auxiliadora Rubio Gimbert, Center of Research Mind, Brain and Behavior

Cristina Falcon Muñoz de Bustillo, Center of Research Mind, Brain and Behavior

Laura Mas Cuesta, Center of Research Mind, Brain and Behavior

Natalia Bueso Izquierdo, Center of Research Mind, Brain and Behavior

Natalia Hidalgo-Ruzzante, University of Grenada

Juan Verdejo-Romám, Center of Research Mind, Brain and Behavior

Julia C. Daugherty, Center of Research Mind, Brain and Behavior

Agar Marin-Morales, Center of Research Mind, Brain and Behavior, University of Granada

Raquel Gonzalez, University of Grenada

Isabel Peralta-Ramirez, Center of Research Mind, Brain and Behavior

Miguel Pérez-Garcia, University of Grenada

Poster - #266738

Relationship between exposure to violence during childhood and empathy in batterers.

Maria Auxiliadora Rubio Gimbert, Center of Research Mind, Brain and Behavior (CIMCYC). University of Granada. Granada, Spain. (Spain)

María Ángeles García-León, Center of Research Mind, Brain and Behavior. University of Granada

Laura Mas Cuesta, Center of Research Mind, Brain and Behavior

Cristina Falcon Muñoz de Bustillo, Center of Research Mind, Brain and Behavior

Julia C. Daugherty, Center of Research Mind, Brain and Behavior

Natalia Bueso Izquierdo, Center of Research Mind, Brain and Behavior

Juan Verdejo-Romám, Center of Research Mind, Brain and Behavior

Agar Marin-Morales, Center of Research Mind, Brain and Behavior, University of Granada

Natalia Hidalgo-Ruzzante, University of Grenada

Miguel Pérez-Garcia, University of Grenada

Poster - #266862

Can moral dilemmas of violence differentiate batterers from other criminals?

Agar Marin-Morales, Center of Research Mind, Brain and Behavior. University of Granada. (Spain)

Juan Verdejo-Romám, Center of Research Mind, Brain and Behavior

Natalia Bueso Izquierdo, Center of Research Mind, Brain and Behavior

Julia C. Daugherty, Center of Research Mind, Brain and Behavior

Cristina Falcon Muñoz de Bustillo, Center of Research Mind, Brain and Behavior

Maria Ángeles García-León, Center of Research Mind, Brain and Behavior

Laura Mas Cuesta, Center of Research Mind, Brain and Behavior

Maria Auxiliadora Rubio Gimbert, Center of Research Mind, Brain and Behavior

Miguel Pérez-Garcia, University of Grenada

Natalia Hidalgo-Ruzzante, University of Grenada

Topic : Juvenile offenders

Poster - #264344

Ethnicity, Peer Victimization, and Juvenile Delinquency

Cassandra Leong, Adolescent Risk and Resilience Lab, Simon Fraser University (Canada)

Andrew L. Gray, Simon Fraser University

Jodi L. Viljoen, Simon Fraser University

Poster - #267310

Youth Offending and the Influence of Ethnic Identity and Acculturation

Stacey de la Rey, Simon Fraser University (Canada)

Jodi Viljoen, Simon Fraser University

Nicole Muir, Simon Fraser University

Topic : Mental Health treatment

Poster - #264900

Deliberate self-harm behavior and childhood trauma among forensic psychiatric patients

Natalie Laporte, Lund University (Sweden)

Andrejs Ozolins, Linneaus University

Sofie Westling, Lund University

Åsa Westrin, Lund University

Märta Wallinius, Lund University

Poster - #265478

Mapping the levels of deprivation Scottish Forensic Inpatients were living in prior to admission to Forensic Inpatient Services.

Jamie Pitcairn, The State Hospitals Board for Scotland (United Kingdom)

Poster - #266836

The holistic development process of Virtual Reality for Forensic Mental Healthcare

Hanneke Kip, University of Twente, Faculty of Behavioural, Management and Social Sciences, Center of eHealth and Wellbeing Research (Netherlands)

Yvonne Boumann, Stichting Transfore

Saskia Kelders, University of Twente

Dirk Dijkslag, Stichting Transfore

Lisette van Gemert-Pijnen, University of Twente

Topic : Offender services and management

Poster - #264995

The Ontario Review Board Patient Database: Introduction and Initial Findings

Katelyn Mullally, St. Joseph's Healthcare Hamilton (Canada)

Gary Chaimowitz, St. Joseph's Healthcare Hamilton

Mini Mamak, St. Joseph's Healthcare Hamilton

Heather Moulden, St. Joseph's Healthcare Hamilton

Poster - #265209

Adverse Childhood Experiences of Forensic Psychiatric Inpatients: Consequences for Risk Outcomes

Austin Lam, McGill University (Canada)

Ilvy Goossens, Simon Fraser University

Hanie Edalati, University of British Columbia

Minhee S. Seo, University of Toronto

Tonia L. Nicholls, University of British Columbia/BC Mental Health and Substance Use Services

Poster - #265521

An evaluation of Blood-borne Virus screening and immunisation for admissions in Low/Medium secure services across 2 separate Mental Health Trusts

Sanjib Ghosh, Queen Mary University of London & East London Foundation Trust (United Kingdom)

Nodira Nasritdinova, East London NHS Foundation Trust

Laura Samso, Barnet, Enfield and Haringey NHS Trust

Nargiza Saldova, East London NHS Foundation Trust

Poster - #265681

Occupational Freedom Behind Bars: Developing an Occupational Therapy Program at a Male Prison in Virginia

Sarah Smidl, Radford University (United States)

Poster - #266641

Mothers in the criminal justice system, mental health and alternatives to incarceration: Some international perspectives

Rachel Dolan, University of Manchester (United Kingdom)

Poster - #266909

Are Latino Sex Offenders different? Implications for Management and Treatment

Silvia Fraga Domínguez, Maastricht University

Elizabeth Jeglic, John Jay College of Criminal Justice

Poster - #267115

EU COST-Action IS1302 'Developments of the EU initiative : Towards an EU Research Framework on Forensic Psychiatry'

Peter Braun, Pompefoundation part of Pro Persona Mental Health Services Netherlands (Netherlands)

Topic : Public policy and legal issues

Poster - #257805

Sexual abuse of minors within the Catholic Church and other institutions: Introduction to a research project and results of a meta-analysis

Harald Dressing, Central Institute of Mental Health (Germany) Hans-Joachim Salize, Central Institute of Mental Health

Poster - #265974

Opinions of professionals and family members about the Norwegian mental health law regulating involuntary commitment of psychiatric patients

Christian Lauvrud, St.Olav's University Hospital, Forensic department Brøset, Centre for Research and Education in Forensic Psychiatry (Norway)

Roger Almvik, St.Olav's University Hospital

Irina Georgieva, Independent

Richard Whittington, St.Olav's University Hospital

Topic : Violence risk (general)

Poster - #260665

Risk Assessment Made Easy - The Brøset Violence Checklist (BVC)

Roger Almvik, St. Olavs University Hospital, forensic dept Brøset (Norway)

Phil Woods, University of Saskatchewan

Poster - #265983

Cognitive Contributors to Offending: A Delphi Study

Sarah Janes, University of Edinburgh (United Kingdom)

Suzanne O'Rourke, University of Edinburgh

Matthias Schwannauer, University of Edinburgh

Poster - #266613

Recidivism rates and Predictive validity of the Static-99R, BARR-2002R and VRAG-R evaluations among released sex offenders in Belgium

Claire Ducro, CRDS, Tournai; SCALab, Lille 3 (Belgium)

Iléna Strzoda, Université de Mons

Thierry Pham, Université de Mons

Poster - #266723

The use of the HKT-R and SAPROF for predicting aggression in forensic psychiatric patients with ASS

Rianne Bosch, GGNet FPA de Boog

IAFMHS AWARDS

2017 CHRISTOPHER WEBSTER EARLY CAREER AWARD

The Christopher Webster Early Career Award honours Dr. Christopher Webster. Dr. Webster's scholarship and contributions to the topic of violence risk assessment are known to all members of the Association. He is a colleague to many individuals in many countries, and his writings and lectures provide wisdom and significant advancements in knowledge. Of particular relevance to the purpose of this Award, Dr. Webster has acted as a wonderful role model and mentor to several emerging scholars in the field.

We honour his generosity of spirit, the quality of his work, and his instrumental role as a mentor by presenting this award at the annual meeting of the Association. IAFMHS awards one Christopher Webster Early Career Award each year.

We are pleased to announce this year's Christopher Webster Early Career Award winner is

Josanne van Dongen, Erasmus University Rotterdam, The Netherlands

2017 RÜDIGER MÜLLER-ISBERNER AWARD

Dr Rüdiger Müller-Isberner retired from the IAFMHS in 2014 before presenting as keynote speaker at the 2015 IAFMHS conference in Manchester. His contributions to the IAFMHS have been very significant in supporting the Association from its inception and as an excellent role model for others, especially with respect to integrating science and practice. Therefore, the Board of Directors has agreed to offer a new annual 'Rüdiger Müller-Isberner Award'.

This award will be presented each year at the annual conference to delegates nominated for a conference paper that clearly illustrates the link between research and its impact on practice.

We are pleased to announce this year's Rüdiger Müller-Isberner Award winner is

Stål Bjørkly, Molde University College & Oslo University Hospital, Norway

2017 BURSARY AWARDS

In keeping with the collaborative spirit and international focus of IAFMHS, the Association endeavors to provide financial assistance when possible to individuals in less developed countries to attend our annual conference to present their research findings. IAFMHS is pleased to announce that funds are available to award up to six (6) bursaries of \$1500 CAD each to assist with travel costs associated with attending and presenting at the 2017 conference in Split, Croatia.

We are pleased to announce this year's Bursary Award winner is

Kobus Coetzee, Weskoppies Hospital, University of Pretoria, South Africa

STUDENT AWARDS

The IAFMHS Student Board offers four (4) financial awards each year. These awards consist of two Presentation Awards and two Travel Awards. Presentation Awards aim to acknowledge the research efforts and presentation skills of first-author student presenters (poster and oral) at the conference. Presentation awards will be judged at the conference and will be announced at a later time.

The two Travel Awards are intended to help students from under-represented countries and/or institutions with demonstrated financial need attend our yearly conference. We are pleased to announce this year's Student Travel Award winners:

- **Laura Hemming, University of Manchester, United Kingdom**
- **Romain Desclos, Alliant International University, USA**



PROTECT INTERNATIONAL RISK AND SAFETY SERVICES

ProActive is now Protect!

Protect International Risk and Safety Services is Stephen Hart, Randall Kropp, Kelly Watt, Laura Guy, and Kevin Douglas. We are internationally recognized for our academic and professional work related to violence risk assessment and management, also known as threat assessment and management. We play leading roles on the editorial boards of leading journals and executive committees of professional associations in the fields of forensic mental health and threat assessment. You may have worked with or purchased materials from us at ProActive ReSolutions. Due to corporate restructuring, those services and products are now offered through our new company.

Our services include training, implementation support, case assessment and management, legal consultation, policy review and development, and program evaluation and research. Our products include violence risk assessment manuals and worksheets for tools such as the HCR-20, SARA and B-SAFER, RSVP and SVR-20, and SAM, as well as licenses and software applications for those tools.

Our clients work in many different sectors, including health care (general, civil, and forensic), higher education, human resources, social services, law enforcement, national security, corporate security, and corrections.

Our reach is global. We have delivered services and products in 52 countries.

We are proud to be Gold Level Sponsor of this year's IAFMHS conference. To speak with one of us and learn more about our services and products, please visit our display table in the exhibitors area—or, in a few short weeks, visit our new website!

www.protect-international.com

736 Granville Street, Suite 210, Vancouver, BC, Canada V6Z 1E4
Phone: +1.778.819.7036 Email: info@protect-international.com



PROTECT INTERNATIONAL
RISK AND SAFETY SERVICES

SIFER

Network of Norwegian Centers for Research and Education in Forensic Psychiatry

St. Joseph's
Healthcare  **Hamilton**